

玩学块儿

PLUGIN LEARNING BLOX

设计：众建筑
地点：广东省深圳市

Design: People's Architecture Office
Location: Shenzhen, Guangdong Province

北立面 North facade © 众建筑 People's Architecture Office





东立面 East facade © 众建筑 People's Architecture Office



室内中庭 Indoor atrium © VPHOTO

主持建筑师
何哲, 沈海恩, 臧峰

项目建筑师
沙靖海

展览团队
冯紫晴, 李添慧

主办方
龙岗区人民政府

赞助方 / 施工单位
中建科技集团

策展方
未来 + 学院

建筑面积
330m²

设计周期
2020.11-2020.12

建造周期
2020.12

摄影
众建筑, VPHOTO

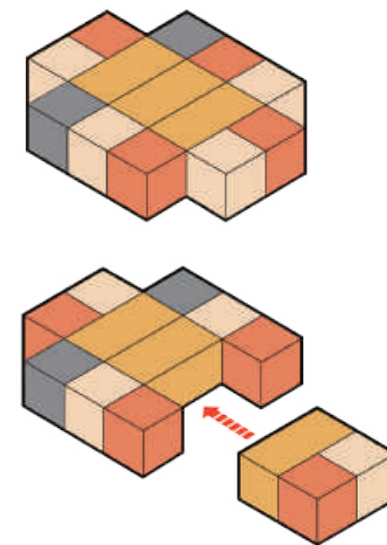
“玩学块儿”是一个快速出现的项目制学习空间单元。未来教育更强调个体的自主学习、面对真实社会问题，提供系统化解决方案的能力。因此跨学科的项目制教学会成为一种教学常态。

“玩学块儿”由围绕项目组开放展示区的若干项目组工作室构成，因为模块化的空间设计，可成为未来学校可复制的基本空间单元。其中项目组工作室是小组与个人学习研究的独立空间，核心的开放展示区是小组主要的展示和交流空间，社区也可通过这个空间参与到学校教育之中。

“玩学块儿”旨在探讨“破解上学难”的问题，即如何在城市闲置空地上快速搭建、以缓解城市上学难的痛点。为此，建筑采用中建科技的集成房屋模块来建造，以框架式的箱体为基本预制单元，全部构件在工厂生产，现场安装只花了3天的时间。展览结束后可全部拆除并重复利用。

“玩学块儿”作为未来+学院策划的“闪建策略园”的一部分，参与了2019年深港双城双年展。展览期间，承担园区具体教学展示的功能，项目开放展示区中介绍众建筑研发的玩学架（Plugin Learning Loft），该项目是一个学前儿童的空间教具研究计划，旨在将空间作为早期教育的第三个教学维度。玩学架由基本的空间框架和可替换的填充物料组成，这些多样化的填充物料支持通过游戏来进行学习。

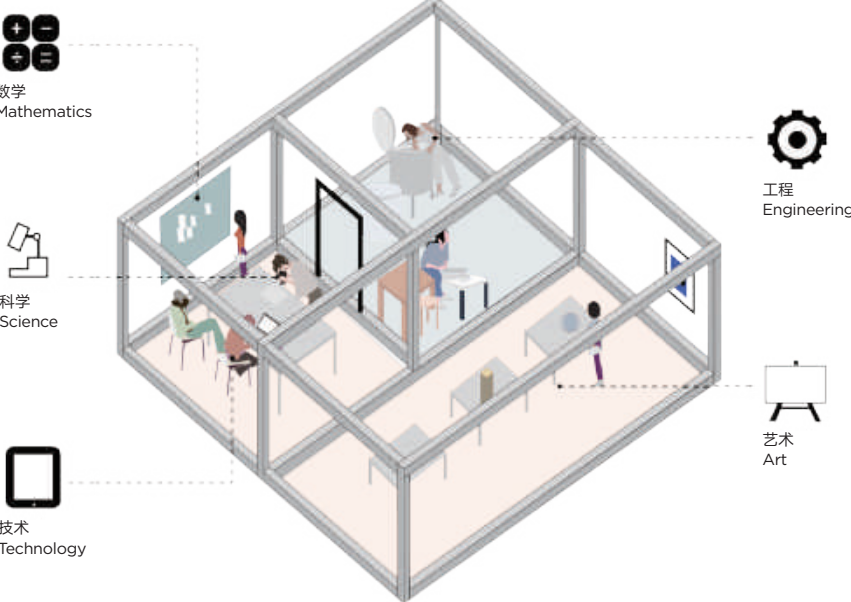
- 项目组工作室（室内） Project groups (interior)
- 项目组工作室（室外） Project groups (exterior)
- 项目组开放展示区 Common area
- 交通空间 Transportation space



项目制教室模块单元
Project-based classroom module unit

The project is a pop-up school that can be rapidly deployed and easily adapted to current and future education models.

Advances in education call for greater emphasis on self-directed learning, social connection, and systematic problem solving. Interdisciplinary project-based learning is becoming a crucial methodology for young individuals.



项目组工作室单元 Project group studio unit

The “Plugin Learning Blox” is composed of several classrooms organized as project groups around a common area. Educational activities are held in the central public space where the community is invited to participate.

The project classrooms serve as breakaway spaces for smaller group and individual learning. The Plugin Learning Blox helps alleviate the high demand for educational space in rapidly growing cities. It also responds to the need for classrooms to support innovative learning as China transitions to a post-industrial economy. The building uses the China Construction Science & Technology Company’s prefabricated building system, the same flat-pack modular system used to build a hospital in 10 days in Wuhan. All the components were produced in a factory and the construction on site took 3 days. The building can also be disassembled, relocated and reused.

The Plugin Learning Blox was presented as part of The Popup Campus organized by FuturePlus Academy for the 2019 Shenzhen-Hong Kong Bi-City Biennial of Architecture\Urbanism. As part of the exhibition, PAO’s Plugin Learning Lofts occupied the central common area to support educational activities. The project is a prototype designed to explore space as a third teaching dimension in early age education. The “Plugin Learning Loft” consists of a basic spatial structure with interchangeable infill elements that support learning through play.



CHIEF ARCHITECT
HE Zhe, James Shen, ZANG Feng

PROJECT ARCHITECT
SHA Jinghai

EXHIBITION TEAM
FENG Ziqing, LI Tianhui

ORGANIZER
Longgang District Government

SPONSOR / CONSTRUCTION COMPANY
China Construction Science & Technology Co., Ltd.

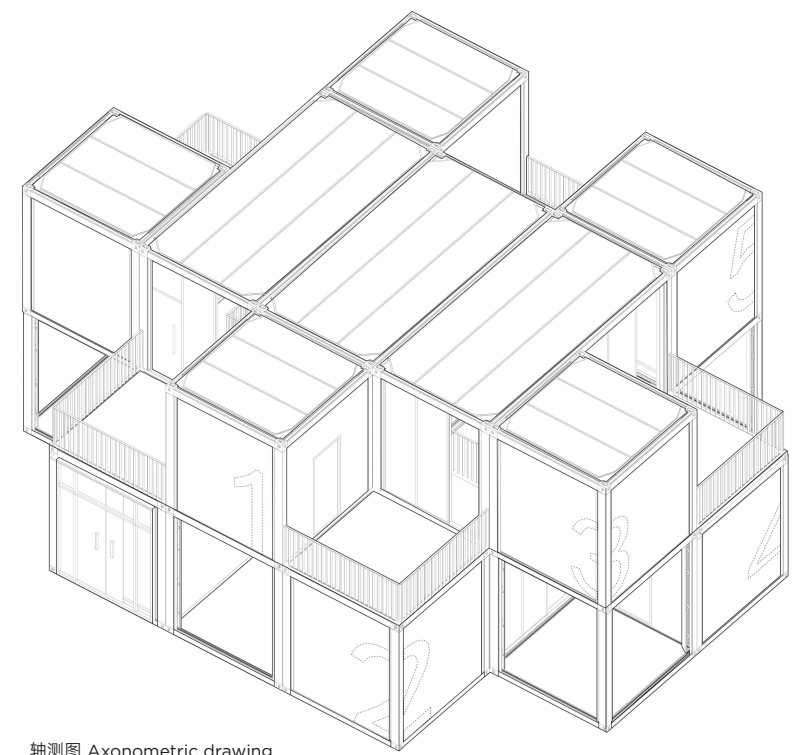
CURATOR
FuturePlus Academy

GROSS FLOOR AREA
330 m²

DESIGN PERIOD
2020.11-2020.12

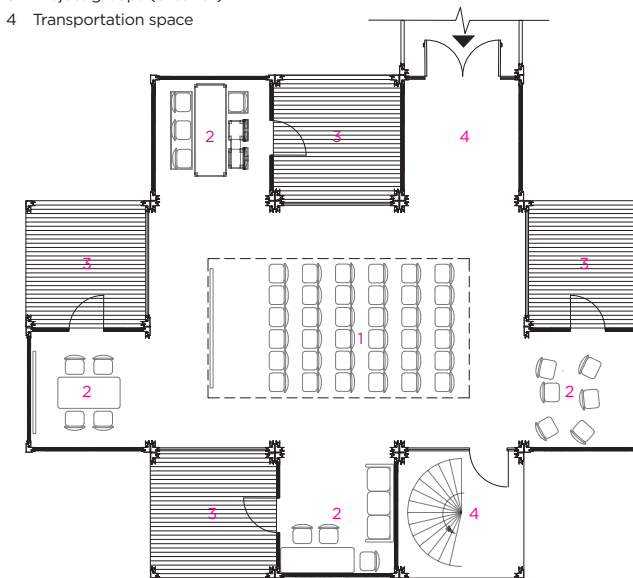
CONSTRUCTION PERIOD
2020.12

PHOTOGRAPHY
People's Architecture Office;
VPHOTO

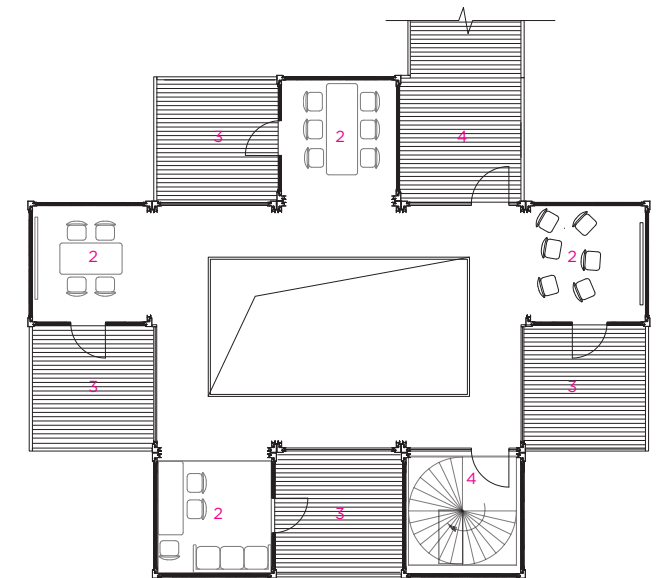


轴测图 Axonometric drawing

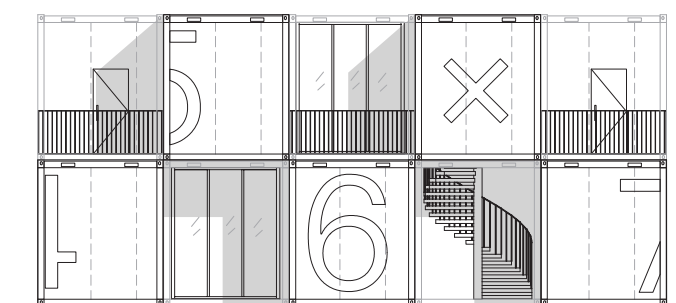
- 1 项目组开放展示区
- 2 项目组工作室(室内)
- 3 项目组工作室(室外)
- 4 交通空间
- 1 Common area
- 2 Project groups (interior)
- 3 Project groups (exterior)
- 4 Transportation space



首层平面图 First floor plan



二层平面图 Second floor plan



南立面 South elevation



西立面 West elevation